



QUALITY  
STEEL  
FABRICATION



Gentlemen:

It is with pleasure we present this brochure for your review and file on quality steel fabrication from AIRCON CORPORATION. The items shown on the following pages will illustrate our manufacturing capability and quality workmanship on steel fabricated products for the CHEMICAL, COAL, GRAIN, PULP & PAPER, and WOODWORKING industries. We're sure you will be pleasantly surprised by our competitive prices and prompt delivery schedules and ask that you call or write for quotations today. Remember... Aircon Corporation can save you time and money!

## AIRCON CORPORATION



16 ft. diameter bolted cyclone and components commonly used as centrifugal (primary) separator located above baler for baling scrap products found in corrugated and boxboard industries.



Components fabricated for dust control system in major grain elevator.



Network of valves and fittings for pulp & paper mill. Operation unknown.





Cone sections for dust filter units with U.H.M.W. liners used as wear plate to protect housing.



4 ft. x 6 ft. holding tank for chemical company from 304L Stainless Steel.



Galvanized components of all shapes and configurations.



72 in. diameter cyclone for high pressure system commonly used in woodworking operations.



Stainless Steel scrubber unit for pulp & paper mill. Set up for hydro testing.





96 in. diameter holding tank from ¼ in. thick type 304 S/S for chemical operation.



Structural tower fabricated and shown being erected by Aircon Corporation.



Oliver washer hood for cotton cellulose plant fabricated from carbon steel & polypropylene. Approximately 14 ft. wide.



Super structure, supports and filter housings fabricated for grain elevator primarily holding soybeans.



Manually operated two-way diverter valve for hi-pressure system used primarily in wood-working operation.

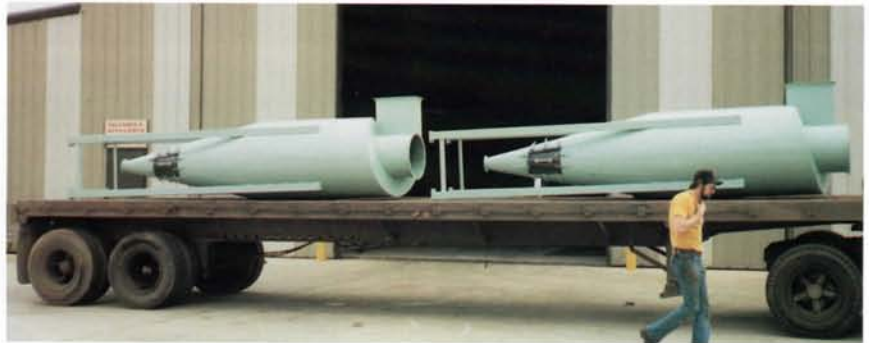




9 ft. diameter transition for woodworking industry.



Fabricated components for heat recovery system at pulp & paper mill.



Cyclone with spiral top for chemical industry.



24 in. diameter spouts fabricated from 3/8 in. thick aluminum.



Structural steel bolted for verification of dimensions before shipping.



11 ft. diameter filter housing for major grain storage facility with holding bin for captured dust.

Holding bin fabricated with bolted construction for major grain handling facility.



Tee injector fittings for hi-pressure pneumatic conveying system.



Stainless Steel machinery cover for pulp & paper mill.



Live bottom bin screws for woodworking operation.





Fabricated ductwork for heat recovery system.



Stainless Steel tanks ranging from 3' diameter to 8' diameter for plastic manufacturing operation.



Holding bin and transition for live bottom screw conveyor for fuel system.



Components fabricated from 3/8 in. plate. Operation unknown.



Hopper units for pulp & paper mill.



36 in. diameter piping for asphalt plant fabricated per customer specifications with TITANIUM explosion vents.



Pipe, elbows and various fittings fabricated and installed for air pollution control system.



Spouting lined with bolted U.H.M.W. liner, sandblasted and painted per customer specifications for grain elevator.

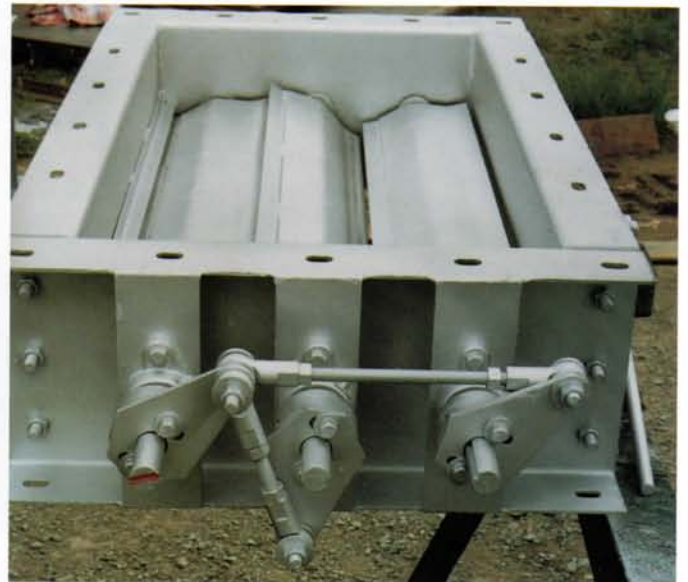




22 ft. diameter bolted holding tank ready for shipment.

22 ft. diameter holding tank for major grain exporter on Gulf Coast. Sand-blasted per SSPC-SP6 with red oxide primer and white enamel finish.

10 ft. diameter hi-efficiency cyclone fabricated per customer specifications for woodworking operation.



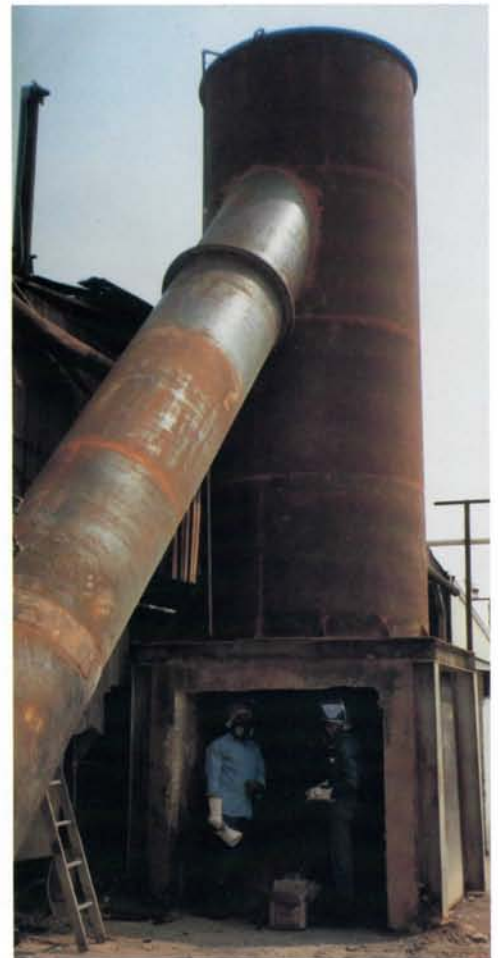
Adjustable dampers of all shapes and sizes furnished to regulate air flows on industrial fans.



Low pressure flat-back elbow for woodworking operation with replaceable wear plate on back.



13 ft. 9 in. diameter cyclone for heat recovery unit for major pulp & paper operation.



Cooling tower for reverb  
furnished for lead refinery.



Miscellaneous stainless and carbon steel  
components for engineering firm. Operation  
unknown.



Hi-pressure flat back elbows with removable  
backs. Commonly used in pulp & paper operation.







Stainless Steel holding chamber for chemical firm. Operation unknown.



6 ft. diameter clarification tank for chemical plant.



Hi-pressure cyclones, pumps, tee injector fittings and other components for pneumatic conveying system in woodworking industry.



Live bottom screw conveyor for feeding boiler.



Holding bin for dust at major grain storage facility. 12 ft. diameter, 40 ft. wide walls, bolted construction.



AIRCON CORPORATION

P. O. Box 80446 • Memphis, TN 38108 • (901) 452-0230  
E-mail: [sales@aircon-corporation.com](mailto:sales@aircon-corporation.com) • [www.aircon-corporation.com](http://www.aircon-corporation.com)